



DREAM CRUISES

WORLD DREAM

Asia's newest luxury cruise ship



WORLD DREAM

On World Dream guests can explore the world's finest on one ship, with an exciting array of Asian and international dining, iconic global brand experiences and diverse entertainment options – all whilst visiting some of Asia's most inspiring destinations.

WORLD DREAM IN NUMBERS

Gross Tonnage: 150,695tons

Length: 335m

Width: 40m

Decks: 18

Passenger Capacity: 3,376 (lower berth)

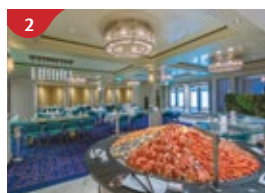
Staterooms: 1,686

Manufacturer: Meyer Werft, Germany



Prime Steakhouse

Savour premium cuts from around the world.



Seafood Grill

Relish the freshest seafood in the region in Asian or Western style.



Esc EXPERIENCE LAB

Explore different worlds with an incredible selection of VR games for the whole family.



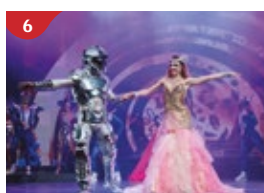
The Dream Boutiques

Splurge on international luxury brands with our duty-free shopping.



The Palace

Indulge in European-style butler service and exclusive facilities.



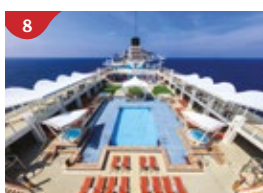
Zodiac Theatre

Enjoy live production shows from the acclaimed award-winning entertainment team.



Crystal Life™

Rejuvenate mind, body and soul with our holistic Western and Asian spa experience.



Main Pool Deck

Stay cool at the swimming pool and Kids Water Park.



Waterslide Park

Get drenched in fun on one of our six different waterslides.



Dream Night

Feel the electricity in the air at our live fireworks and laser show at sea.



Dream Dining Room*

Asian and International ballroom dining



Hot Pot

Outdoor hot pot with scenic ocean views



Umi Uma Teppanyaki & Korean BBQ

Grand tables for grilling action



Silk Road Chinese Restaurant

Chinese fine dining in old glamour setting



Karaoke

Five private karaoke rooms



Ropes Course

Features thrilling zipline over the sea



Little Pandas Club

Kids club with supervised activities



Zouk Beach Club

Outdoor party/entertainment venue

RESTAURANTS & BARS	Deck
Palm Court	19
Sun Deck Bar	17
The Lido*	16
Pool Deck Bar	16
Crystal Life Cuisine	15
Dream Dining Room Upper*	8
Hot Pot	8
Umi Uma	8
Prime Steakhouse	8
Seafood Grill	8
Vintage Room	8
Bar City	8
Johnnie Walker House	
Penfolds Wine Vault	
Bubbles Champagne Bar	
Mixt Cocktail Bar	
Dream Dining Room Lower*	7
Blue Lagoon	7
Red Lion	7
Bar 360	6
Lobby Café	6
Silk Road Chinese Restaurant	6

TEENAGERS & CHILDREN	Deck
Little Pandas Club	16
Arcade	16

SPORTS & RECREATION	Deck
Waterslide Park	20
SportsPlex	19
Mini-Golf	18
Rock Climbing Wall	18
Ropes Course	18
Sun Deck	17
Jogging Track	17
Main Pool Deck	16
Kids Water Park	16
Boardwalk	8

BEAUTY & WELLNESS	Deck
Crystal Life Fitness	15
Crystal Life Spa	15
Le Salon	15
The Gentlemen's Barber	15
Crystal Life Asian Spa	5

THE PALACE	Deck
Palace Pool Side Café	18
Palace Pool & Sun Deck	18
Palace Gymnasium and Studio	18
Palace Spa	18
Palace Restaurant	17
Palace Lounge	17
Palace Reception	17

GENTING CLUB	Deck
Club	16
Lounge	16

ENTERTAINMENT	Deck
Zouk Private Party Deck	18
Zouk Beach Club	17
Esc EXPERIENCE LAB	17
Resorts World At Sea	7,6
Zodiac Theatre	7
Mahjong, Cards & Board Games Room	6
Karaoke	6
International Room	6
Premium Room	6

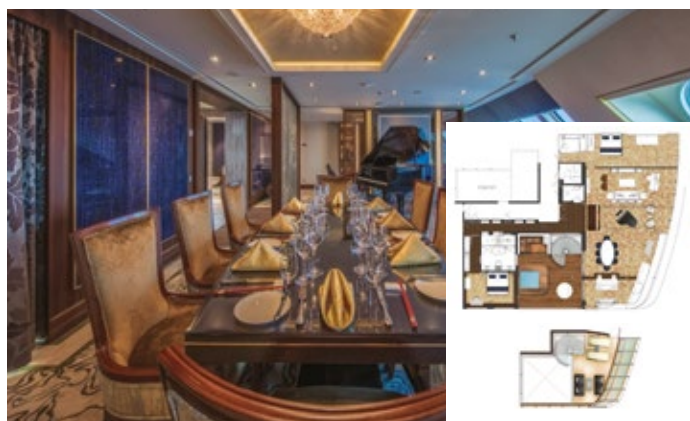
RETAIL	Deck
Art Gallery	8
The Dream Boutiques	7
The Dream Store	7
Souvenir Mart	7
Photo Corner	7

OTHER SERVICES	Deck
Business Centre	19
Bridge Viewing Room	15
Helipad Embarkation Lounge	9
Function 8 – Multi-purpose Venue	8
Tributes	8
Meeting Rooms	7,5
Reception	6
Shore Excursions & Cruise Consultant	6
Clinic	5

*Inclusive restaurant

Staterooms

PALACE VILLA



Approx. 224 sq.m | Max Occupancy 6 | Deck 17
1 King-size Bed + 1 Queen-size Bed + 1 Double Sofa Bed

PALACE PENTHOUSE



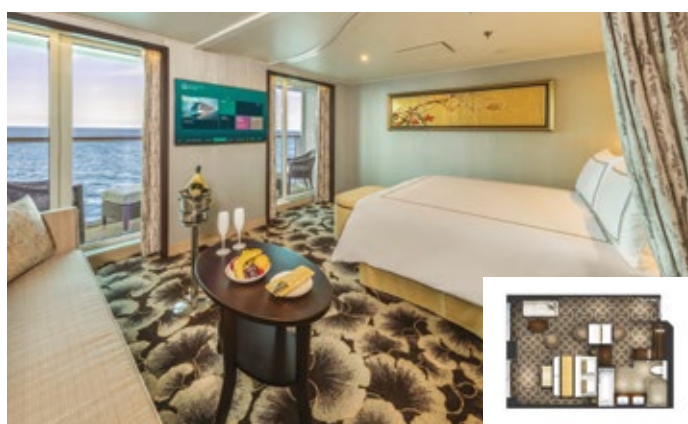
Approx. 56 sq.m | Max Occupancy 4 | Deck 13
1 King-size Bed + 1 Double Sofa Bed

PALACE DELUXE SUITE



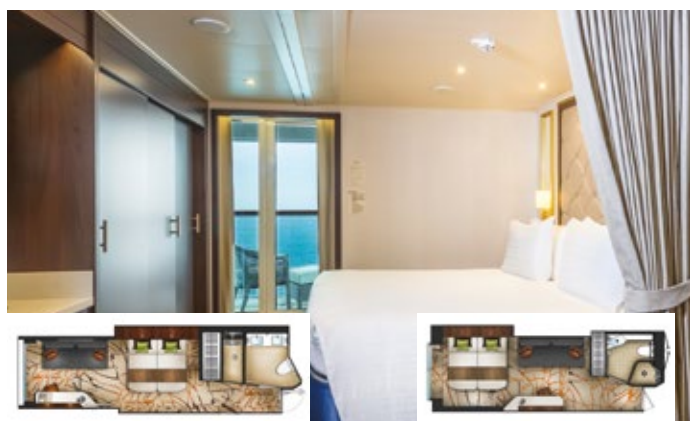
From 41 sq.m | Max Occupancy 4 | Deck 9/10/11/12/13/15
1 Queen-size Bed + 1 Double Sofa Bed

PALACE SUITE



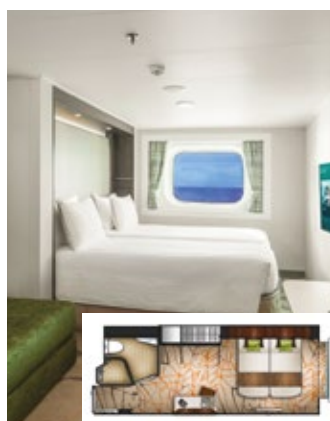
From 37 sq.m
Max Occupancy 4* | Deck 13/15/16/17
1 Queen-size Bed + 1 Double Sofa Bed

BALCONY DELUXE STATEROOM



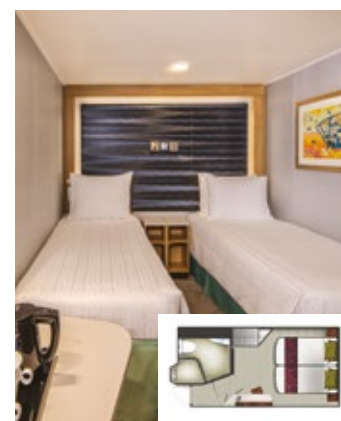
From 22 sq.m
Max Occupancy 3 – 4
Deck 8/9/10/11/12/13/15
1 Queen-size Bed + 1 Single Sofa Bed/
1 Double Sofa Bed/ 1 Single Sofa Bed +
1 Ceiling Pullman Bed

BALCONY STATEROOM



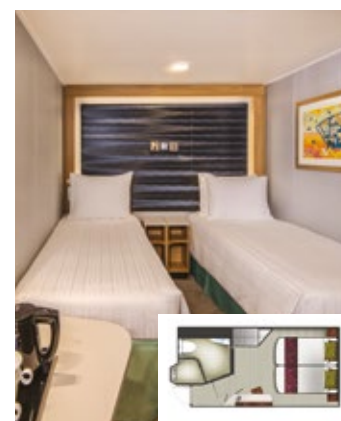
From 20 sq.m
Max Occupancy 3 – 4
Deck 8/9/10/11/12/13/15
1 Queen-size Bed + 1 Single Sofa Bed/
1 Single Sofa Bed +
1 Ceiling Pullman Bed

OCEANVIEW STATEROOM



From 16 sq.m
Max Occupancy 2 – 4
Deck 5/9/10/11/12/13
2 Single Beds + 2 Single Sofa Beds/
1 Single Sofa Bed

INTERIOR STATEROOM



From 13 sq.m
Max Occupancy 2 – 4^
Deck 5/8/9/10/11/12/13/15
2 Single Beds/ 2 Single Beds +
1 Ceiling Pullman Bed/
1 Single Bed + 1 Pullman Bed +
1 Double Sofa Bed

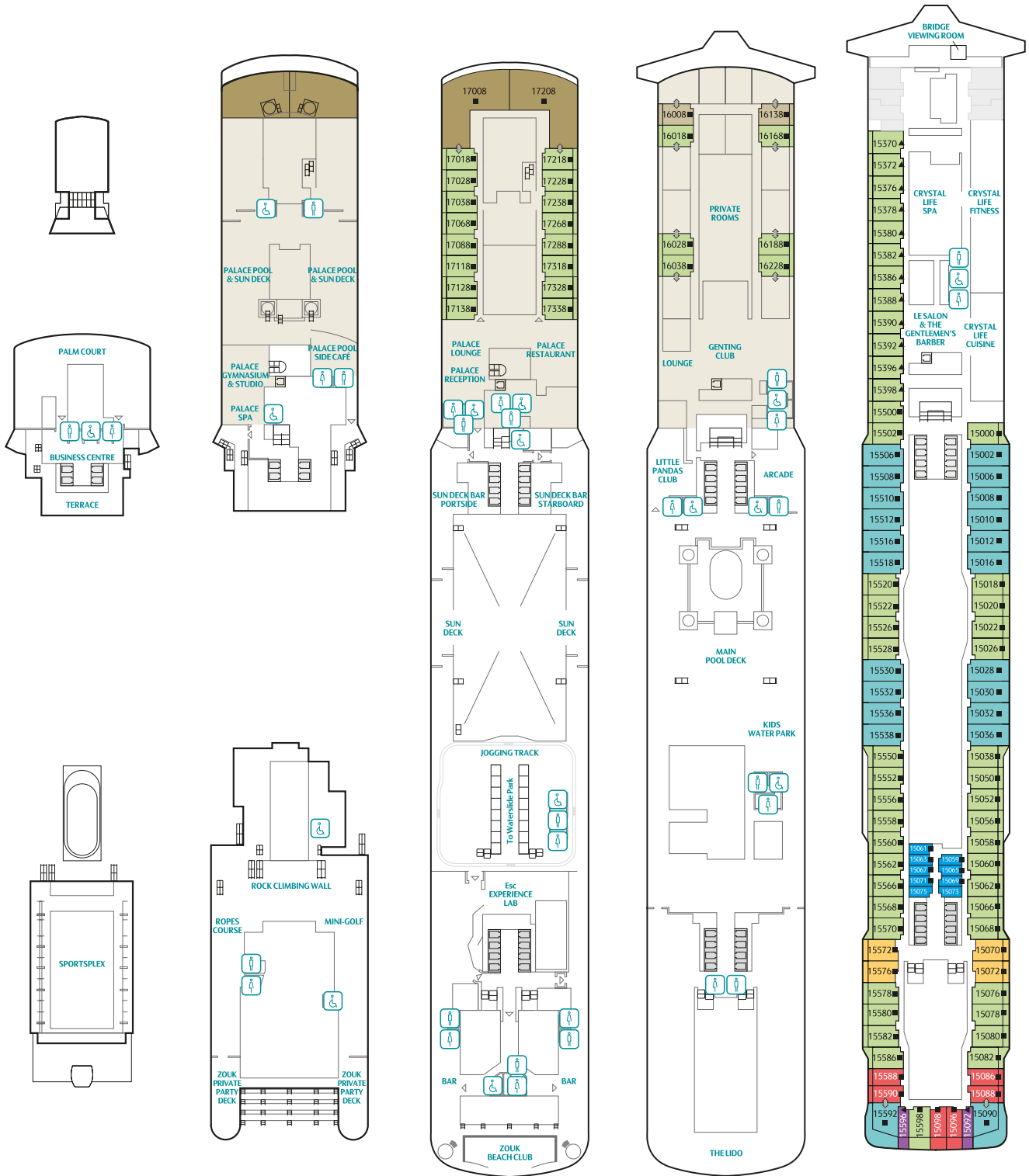
*The maximum occupancy of designated Palace Suites can be up to 6 guests upon request, subject to stateroom availability.

^The above image is for a stateroom configuration for 2 persons – other stateroom configurations for 3 persons and 4 persons are also available.

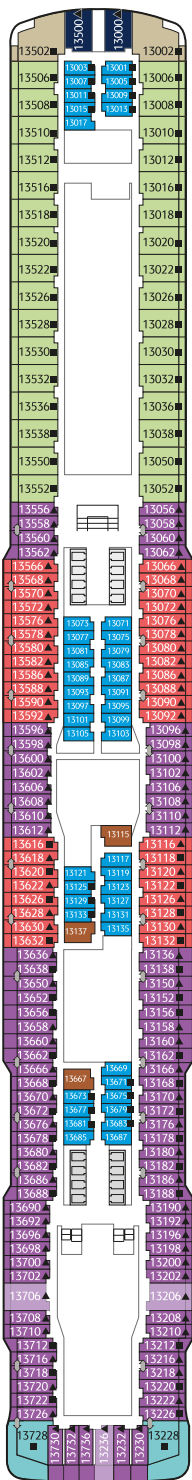
World Dream Deck Plans

CATEGORIES

- Palace Villa
- Palace Penthouse
- Palace Deluxe Suite
- Palace Suite
- Palace Suite (Accessible)

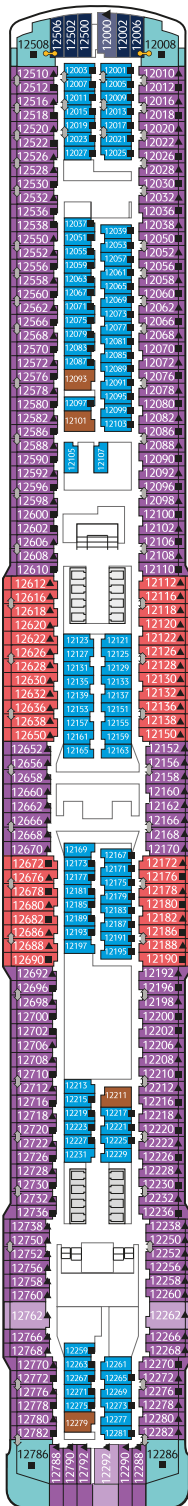


- Balcony Deluxe Stateroom
- Balcony Deluxe Stateroom(Accessible)
- Balcony Stateroom
- Balcony Stateroom (Accessible)
- Oceanview Stateroom
- Oceanview Stateroom (Accessible)
- Interior Stateroom
- Interior Stateroom (Accessible)
- Third person occupancy available
- Up to four persons occupancy available
- Connecting stateroom
- Adjoining Stateroom



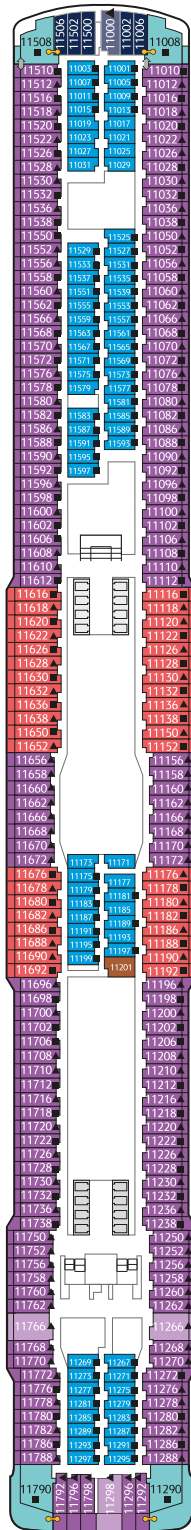
DECK 13

Suites, Balcony Deluxe, Balcony, Oceanview & Interior Staterooms



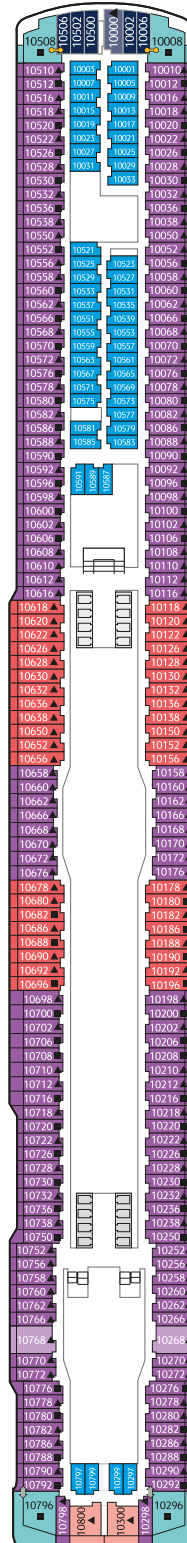
DECK 12

Suites, Balcony Deluxe, Balcony, Oceanview & Interior Staterooms



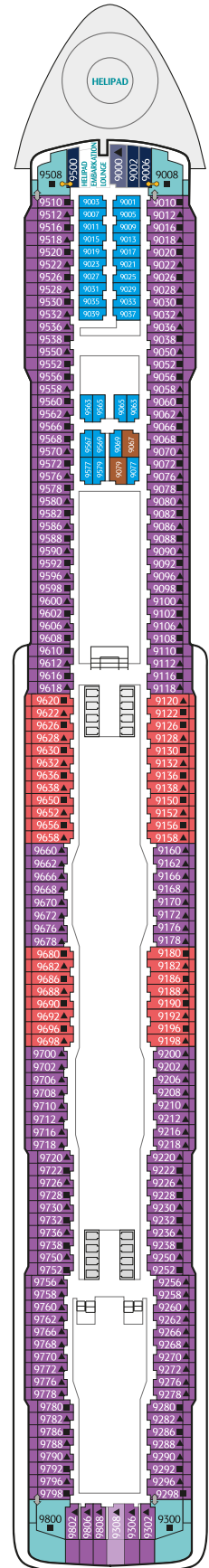
DECK 11

Suites, Balcony Deluxe, Balcony, Oceanview & Interior Staterooms



DECK 10

Suites, Balcony Deluxe, Balcony, Oceanview & Interior Staterooms



DECK 9

Suites, Balcony Deluxe, Balcony, Oceanview & Interior Staterooms, Helipad

Restaurants, Bars, Lounges &
Multi-purpose Venues, Balcony Deluxe,
Balcony & Interior Staterooms

Main Theatre, Meeting Rooms,
Restaurants & Retail Venues

Main Lobby, Reception, Restaurant,
Café, Lounge &
Entertainment Venues

Asian Spa, Meeting Rooms,
Oceanview &
Interior Staterooms



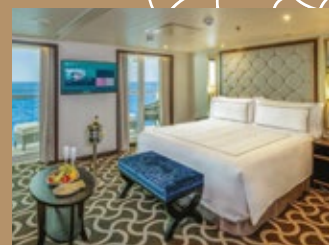
Inclusive fine dining



Exclusive facilities



European-style butler service



Over 150 luxury suites

The Palace is in a class of its own - an elegantly regal “ship-within-a-ship” enclave with over 150 suites and private VIP facilities including its own swimming pool, spa, gym and dining venues. The luxurious essence of The Palace is embodied by the meticulous personalized services of its dedicated team of Dream Butlers, chosen for their gracious attitude, incomparable level of hospitality and unparalleled expertise.

THE PALACE

Meet the Dream Fleet

Our luxury cruise ships, Genting Dream and World Dream, are vessels for your dreams — featuring all the comfort of authentic Asian hospitality, combined with the finest experiences from around the world. Purpose-built for the Asia market, Genting Dream, the first ship of the fleet, debuted in November 2016, with her sister ship World Dream subsequently launched in November 2017, offering guests the highest levels of service and spacious comfort in the region.



GENTING DREAM

WORLD DREAM

To start your Dream vacation, please contact your preferred travel agent, visit us at dreamcruiseline.com or call us:

OFFICE	NUMBER
Australia/New Zealand	(61) 2 9212 6288
Mainland China	(86) 400 849 9848
Hong Kong Special Administrative Region	(852) 2317 7711
India	Ahmedabad (91) 79 2630 8099 Bangalore (91) 99 0096 3807 Mumbai (91) 22 7100 2888 New Delhi (91) 11 4107 7900/01/02
Indonesia	(62) 21 2992 2890/2904/2905
Japan	(81) 3 6403 5188
Malaysia	Kuala Lumpur (603) 2302 1288 Penang (604) 2631 128
Philippines	(63) 2 8366 830/31/32
Singapore	(65) 6223 0002
Taiwan	(886) 2 2175 9562
Thailand	(66) 2 235 7838

Information is correct at time of printing. Dream Cruises reserves the right to cancel and/or substitute any information or any scheduled port of call/itinerary/price/programme at any time and for any reason whatsoever without notice.

© Copyright 2018 by Dream Cruises. All rights reserved. No part of this brochure may be reproduced or used in any means – graphics, electronic or event ideas, including but not limited to photocopying, recording, taping or information from storage and retrieval systems without prior written permission from Dream Cruises. Photos are for reference only. Ver.2.2 (20180131)

A MEMBER OF
GENTING CRUISE LINES